

智慧醫療：台灣的機會和挑戰

李建璋

台大智慧醫療中心副主任
台大急診部主治醫師
史丹佛大學 Biodesign 教學研究員
哈佛大學流行病學博士



Taiwan's **COVID** spike

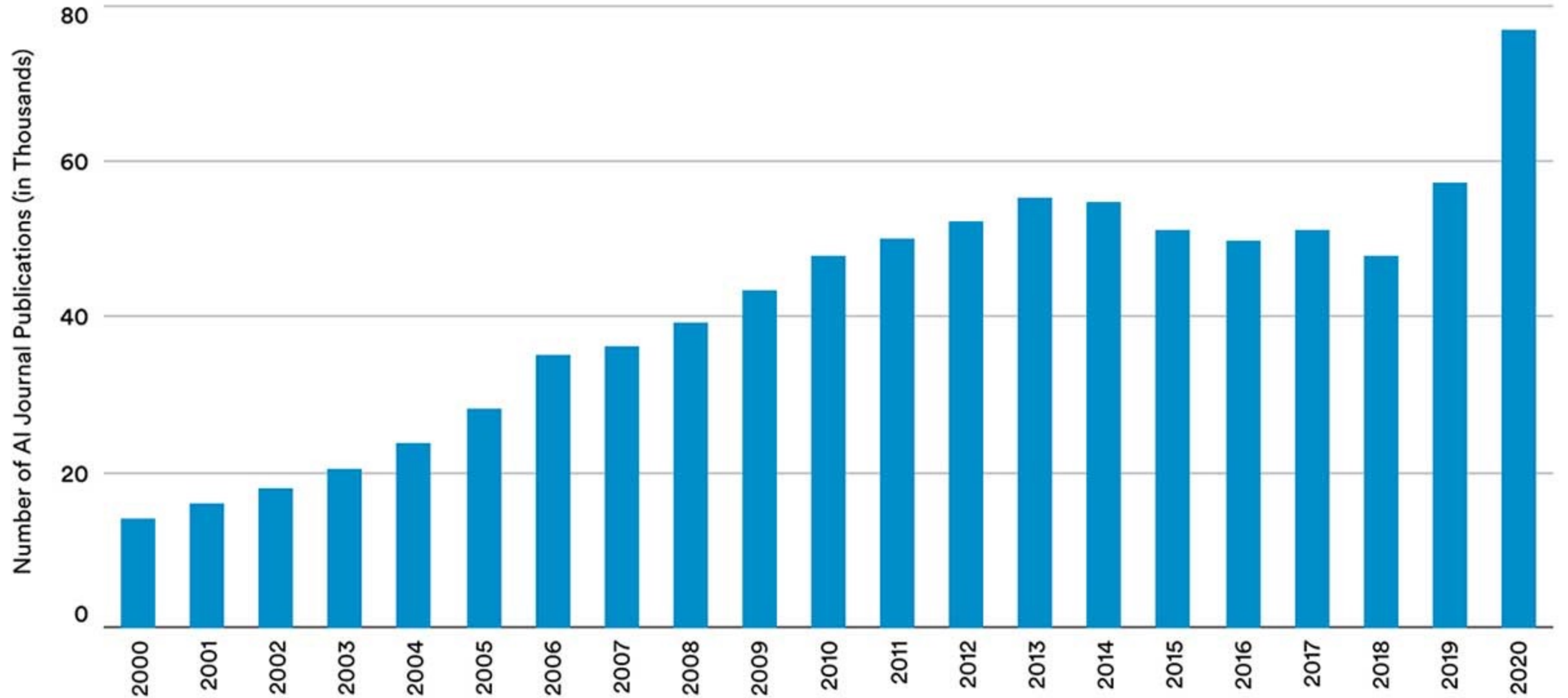


CORONA VIRUS



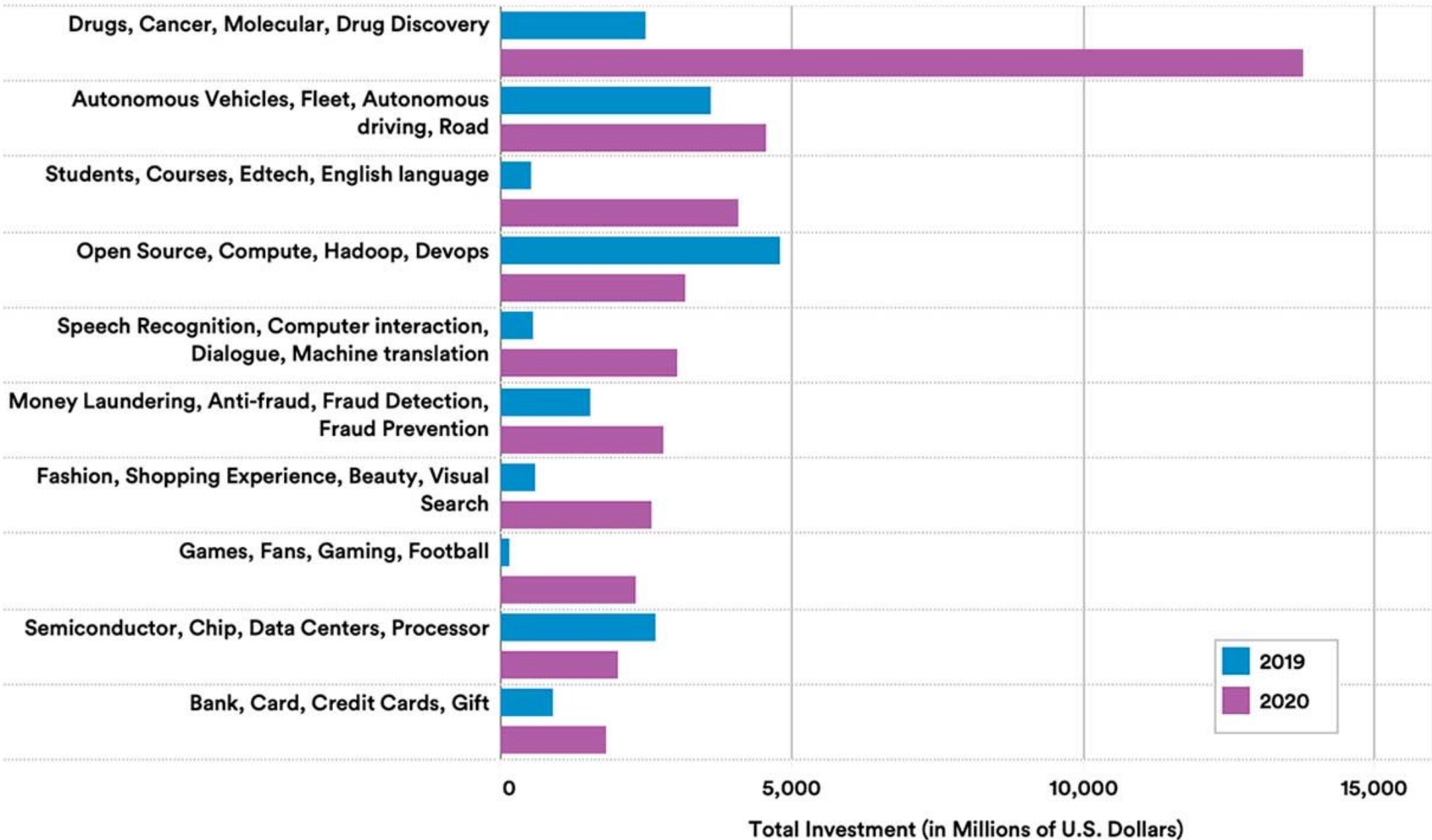
NUMBER of AI JOURNAL PUBLICATIONS, 2000-20

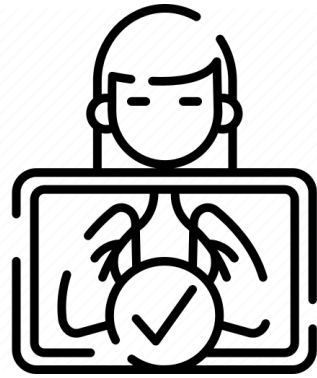
Source: Microsoft Academic Graph, 2020 | Chart: 2021 AI Index Report



GLOBAL PRIVATE INVESTMENT in AI by FOCUS AREA, 2019 vs 2020

Source: CapIQ, Crunchbase, and NetBase Quid, 2020 | Chart: 2021 AI Index Report

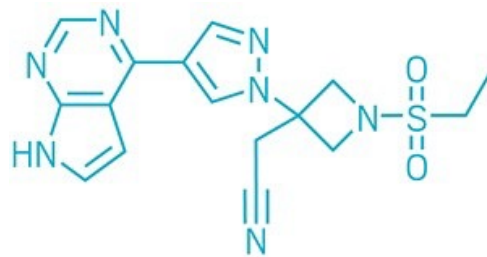




Automatic interpretation
of radiological images

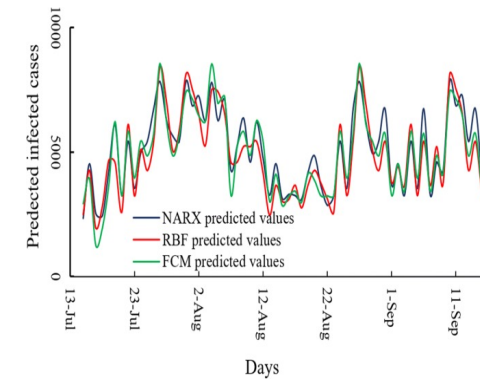


Monitoring disease risks



Baricitinib

Develop new drugs



Predict COVID trend



IBM **Watson**





\$24,000

Who is Stoker?
 (FOR ONE WELCOME OUR
 NEW COMPUTER OVERLORDS)

\$1,000

\$77,147

Who is Bram
 Stoker?

\$ 17,973

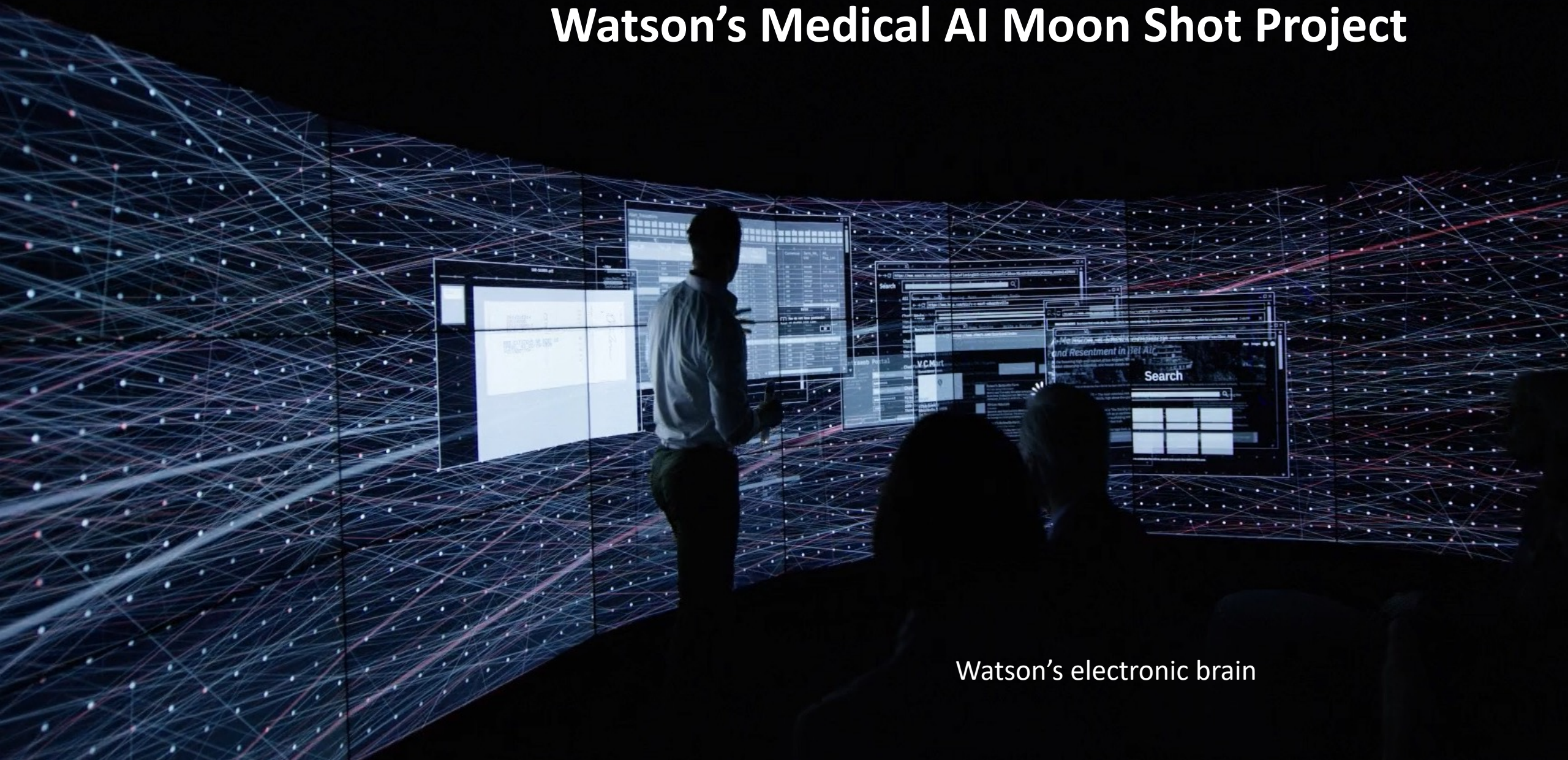
\$21,600

WHO IS
 BRAM STOKER?

\$5600

It seemed that Watson could understand the meaning of language, rather than just patterns of words

Watson's Medical AI Moon Shot Project

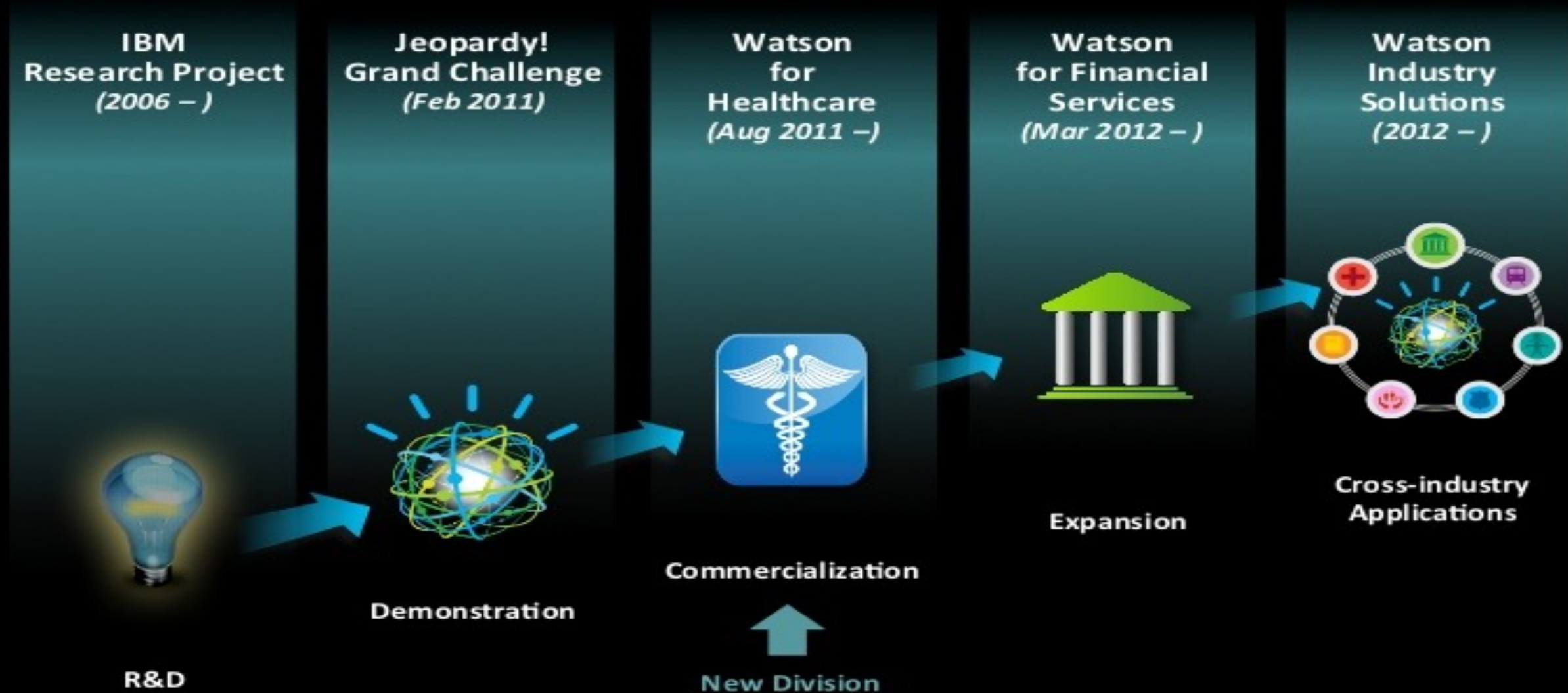


Watson's electronic brain

Dr. Watson

- Goal:
 - Reduce diagnosis errors
 - Optimize treatments
 - Alleviate doctor shortages
- How
 - Collection of symptoms and came up with a list of diagnoses and treatment
 - Each annotated with Watson's confidence level and links to literature
- Confidence
 - Memory banks held knowledge of every rare disease and newest trials
 - Processors not susceptible to cognitive bias

Brief history of IBM Watson

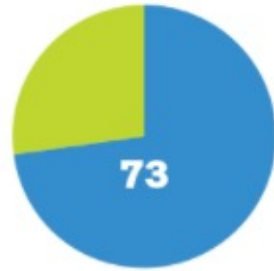


Bumrungrad International
Hospital, Thailand:
83% concordance



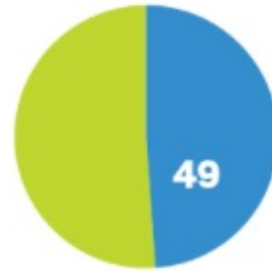
211 patients with breast, colorectal,
gastric, and lung cancer

Manipal Comprehensive
Cancer Center, India:
73% concordance



638 patients with
breast cancer

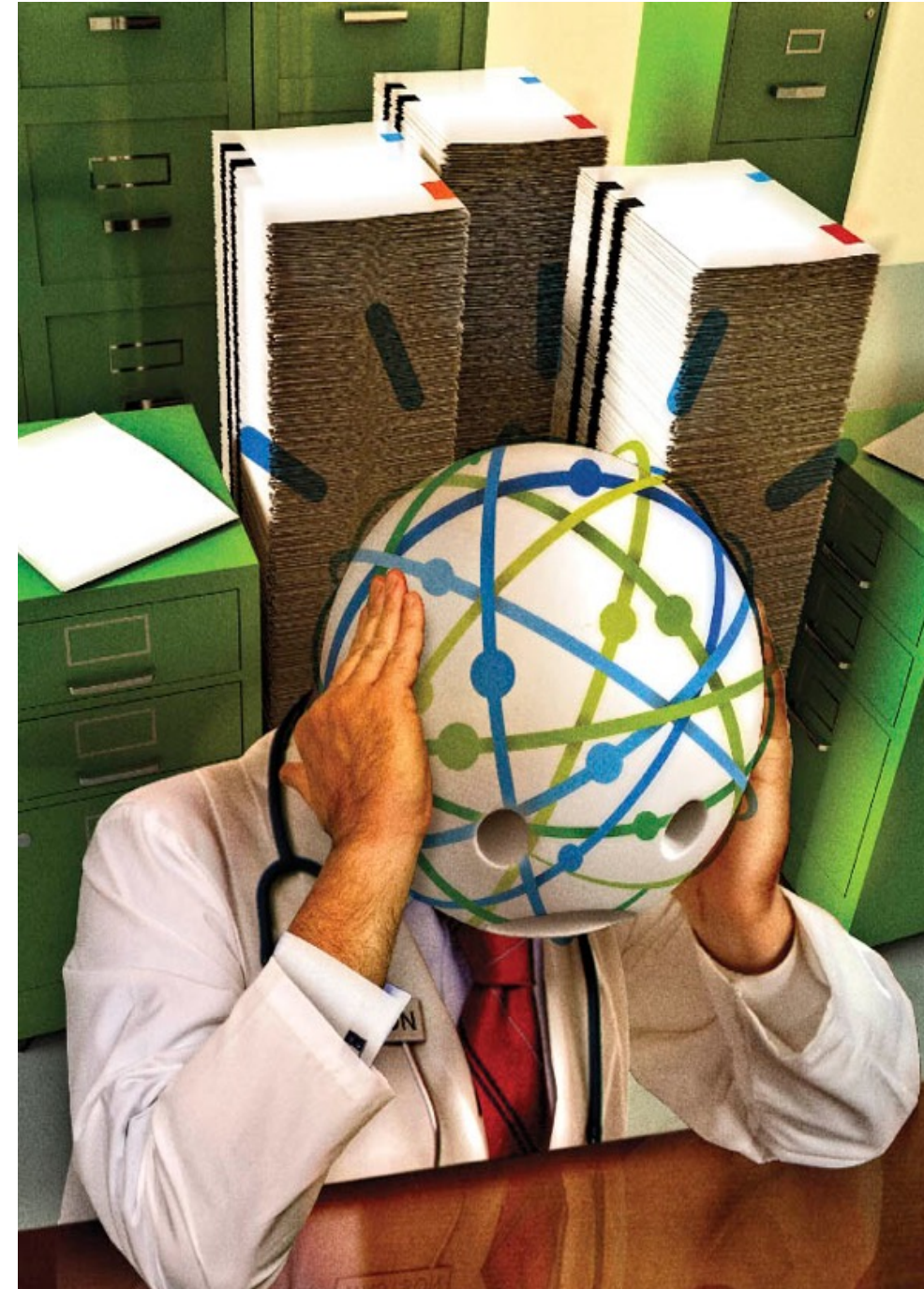
Gachon University
Gil Medical Center, South
Korea: 49% concordance



656 patients with
colon cancer

“This product is a piece of sh-.”

“Multiple examples of unsafe and
incorrect treatment recommendations,”



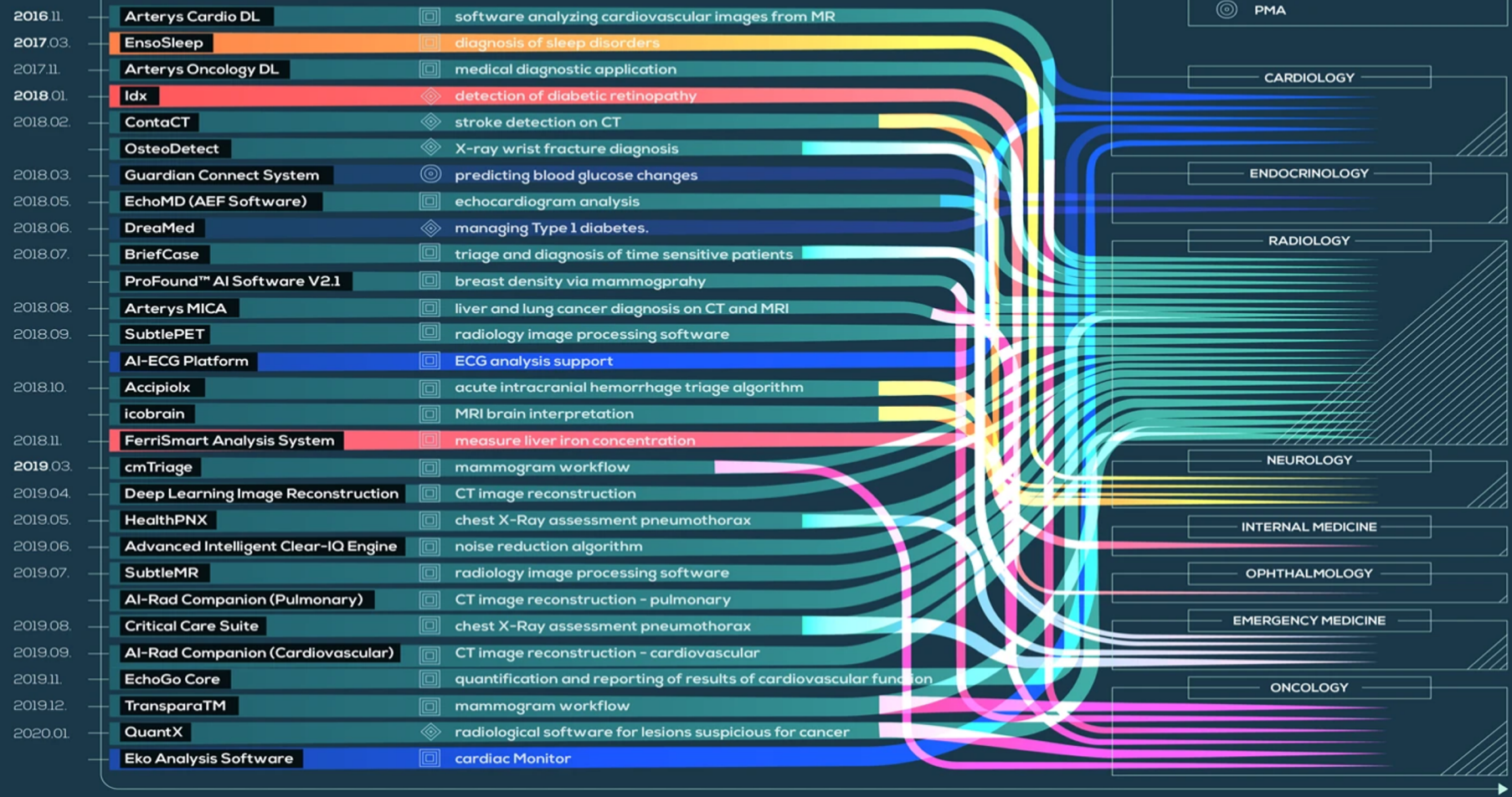
It's all about "DATA"

- That narrative text accounts for about 80 percent of a typical patient's record—and it's a stew of jargon, shorthand, and subjective statements
- Even for MD Anderson, they only have hundreds of beds, could not cover the vast variety of human diseases
- Trained the software on a small number of hypothetical cancer patients, rather than real patient data leads to disaster

Dirty Medical Data

- Heterogeneity
 - Different drug preference for different hospital/physicians
 - Different treatment recommendation over different periods
 - Different insight for different levels of doctors
 - Different selection of testing orders
- Problems specific for Taiwan
 - Use a lot of atypical short-hand
 - Physician's note, not English, not Chinese, but "Taiwanese Chinglish"
 - Under-recording for doctor's note, overrepresenting of nurse charting notes

FDA APPROVALS FOR ARTIFICIAL INTELLIGENCE-BASED DEVICES IN MEDICINE

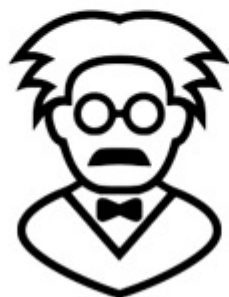


Of 29 FDA approved SaMD,
Image applications account for >70%

資料



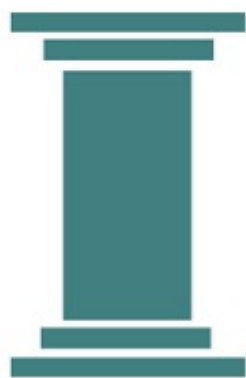
人才



算力



轉譯



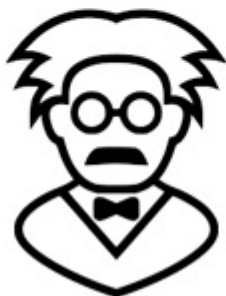


台灣的機會和挑戰

資料



人才



算力



轉譯





IMAGENET





Let's build a Medical ImageNet of Taiwan



Photos



Videos



Ultrasound



X-Rays



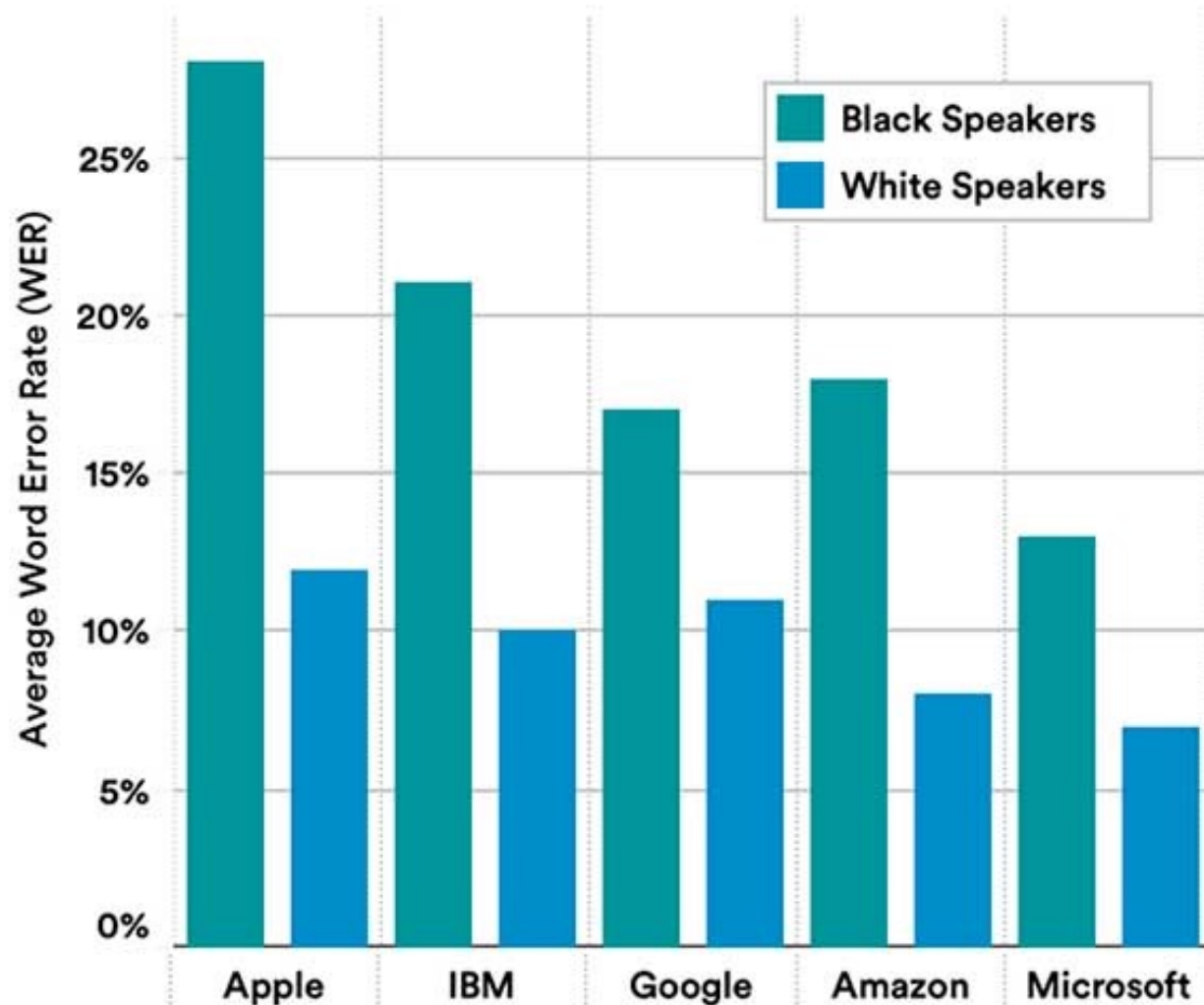
CT Scan



MRI

TESTINGS on LEADING SPEECH-to-TEXT SERVICES: WORD ERROR RATE by SERVICE and RACE, 2019

Source: Koenecke et al., 2020 | Chart: 2021 AI Index Report



AI model is ethnic/region sensitive

AI model based on Western countries may not be able to apply to Asian countries

台灣三座金山



GOLDMINE

健保資料庫



GOLDMINE

電子病歷資料庫



GOLDMINE

人體生物資料庫

挑戰- Privacy Issue



A truly international resource

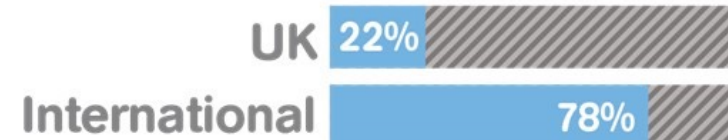
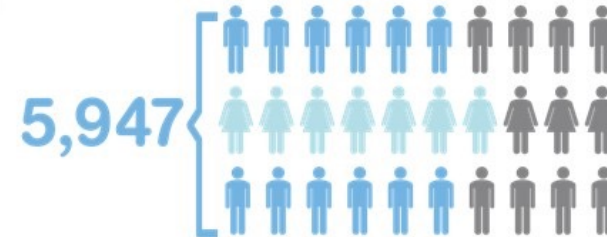
2012



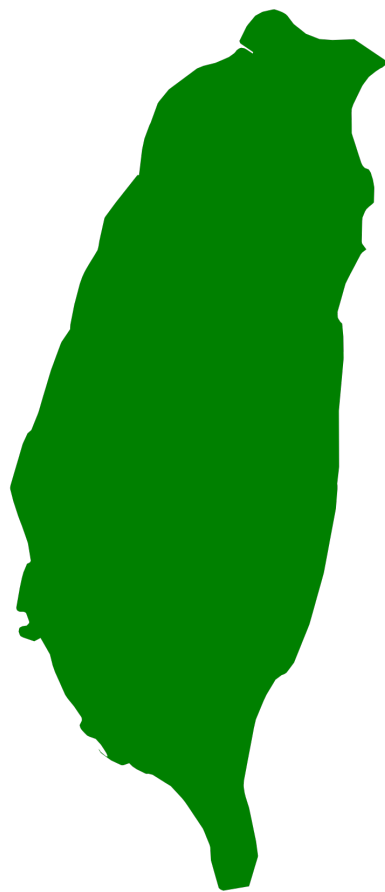
OVER 19,000 GLOBAL REGISTRATIONS



2019



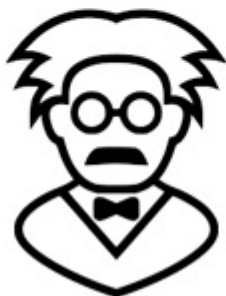
資料



資料



人才

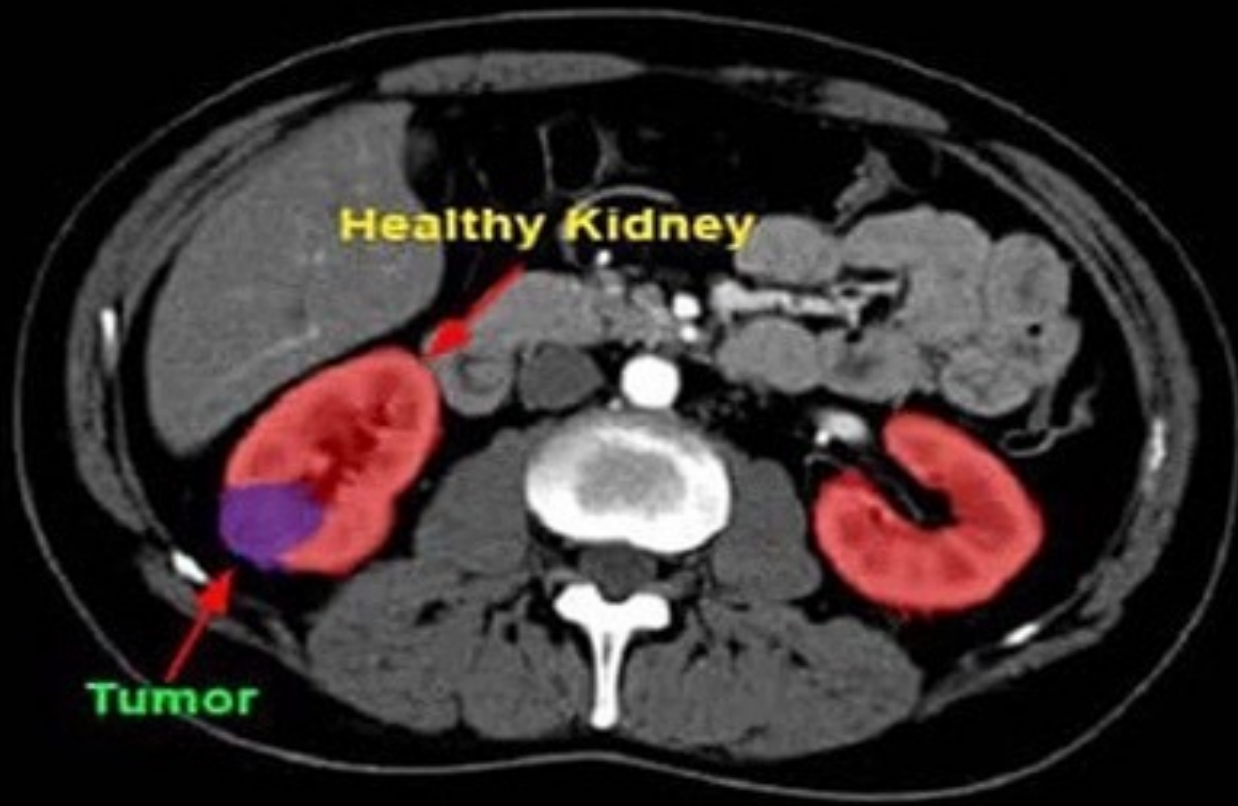


算力



轉譯





Medical image needs lots of efforts for annotation

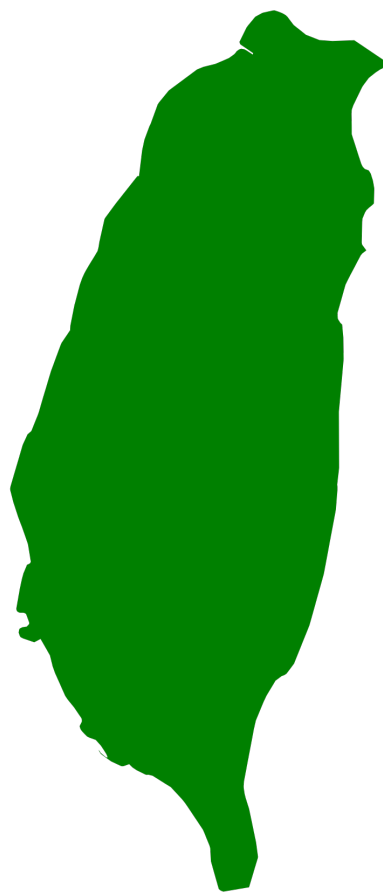
Cross-disciplinary Training



人才



AnnotationIST

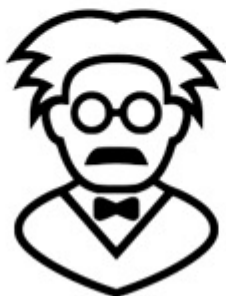


**Cross-disciplinary
professionals**

資料



人才



算力



轉譯



臺大醫院建置二套 NVIDIA DGX-A100

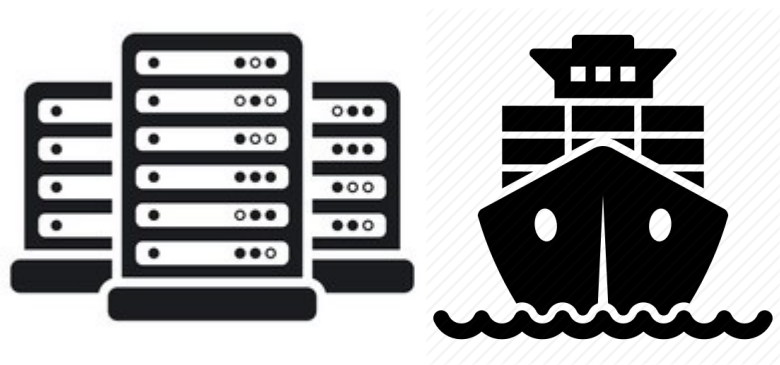
目前運算效能最快的AI超級電腦

醫學影像辨識、基因體分析需要龐大的電腦儲存與算力

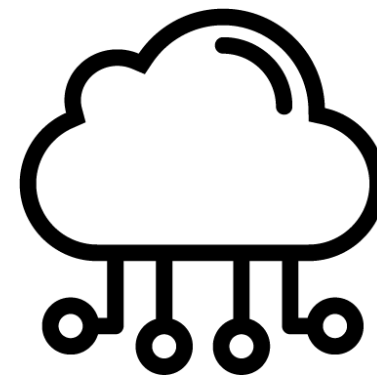
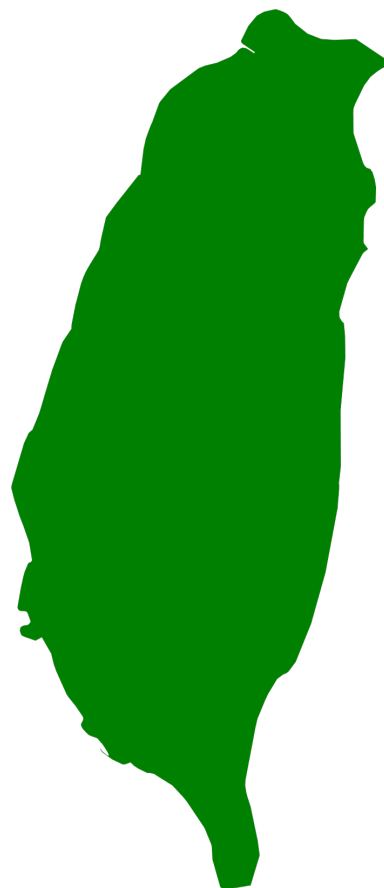
- 醫療影像: 提升2倍效能
- 自然語言: 提升5倍效能
- GPU 分成七個執行體，提升7倍效能
- 支援基因高速運算，提升2.25倍效能
- 人類全基因定序僅需20分鐘



算力



Strong IT industry

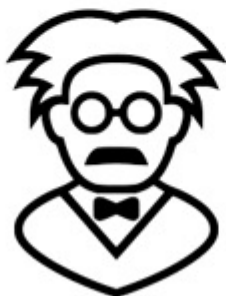


Underuse of cloud computing

資料



人才



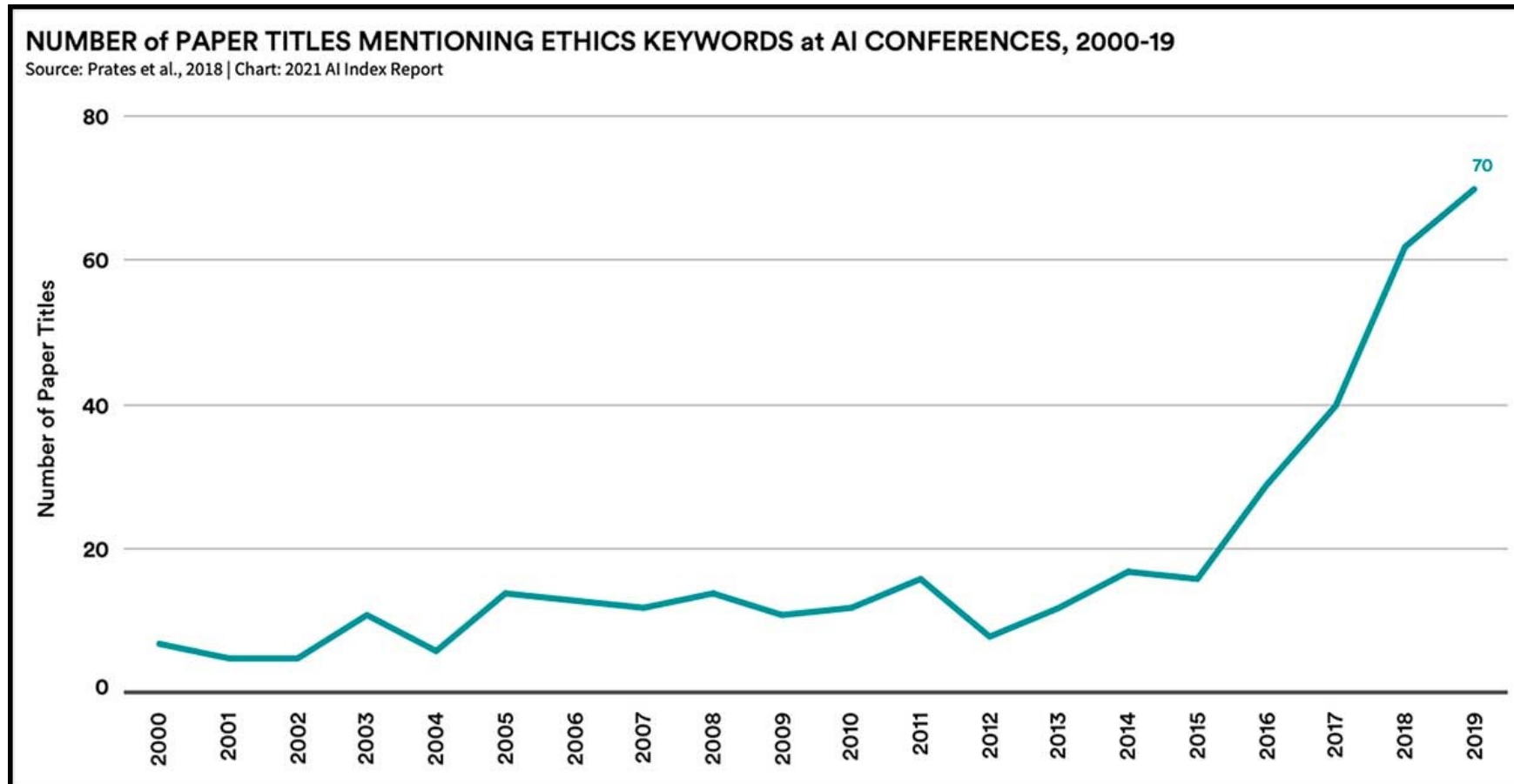
算力



轉譯



AI paper hits record high



Newly funded AI startup record low

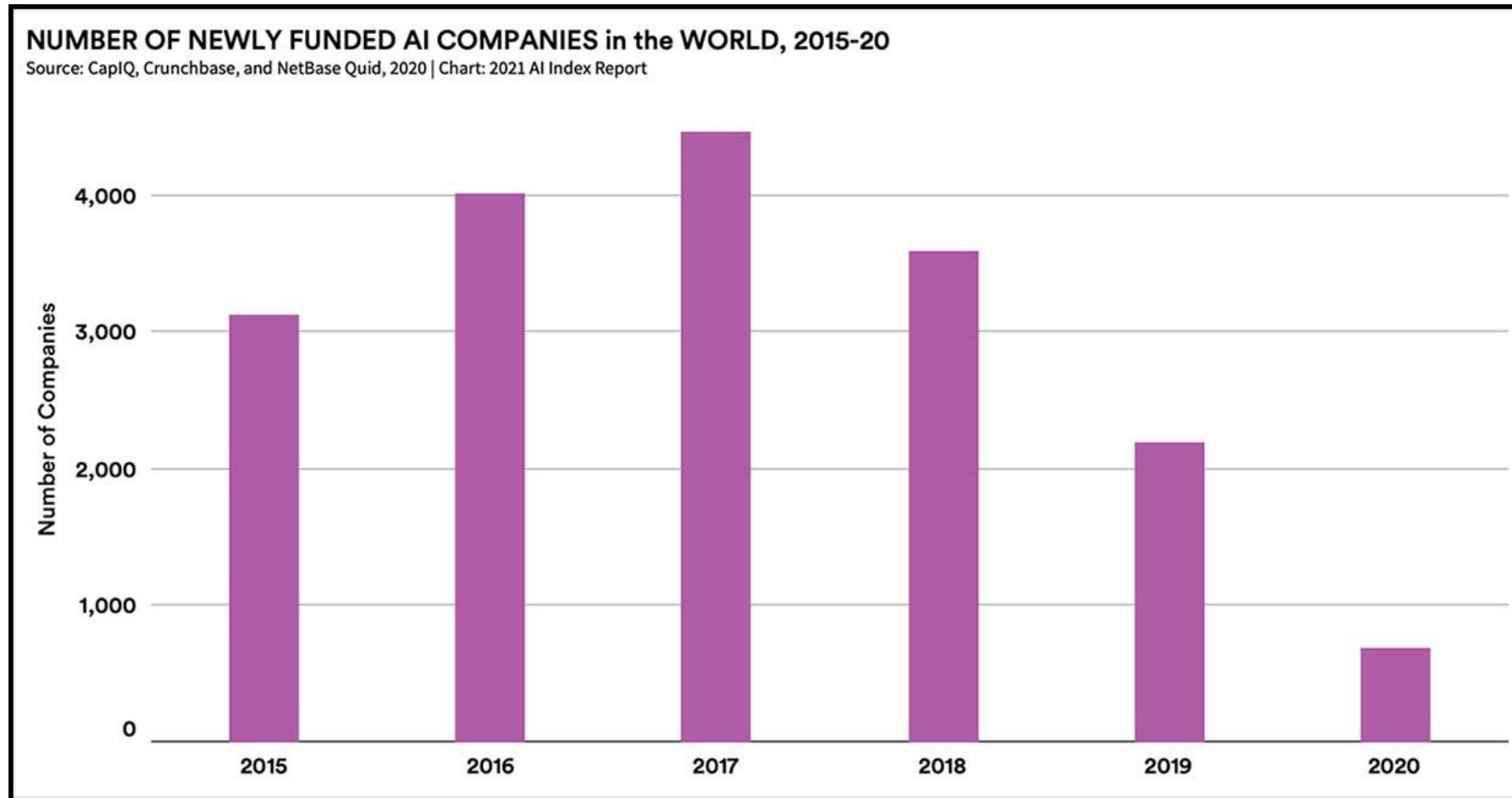


Table 1 Clinical machine learning readiness levels

TRL	NASA Definition	Clinical Definition	Explanation	Examples	Papers
1	Basic principles observed and reported	Clinical problem identification	Identification of potential medical machine learning solution to defined clinical problem. Appraisal of the literature is carried out. Medical research question is defined	Review of the literature giving clinical motivation for model Detailed clinical problem definition with identification of gap for novel machine learning solutions	0%
			... of potential medical machine ... to clinical ... and out	Project proposal with Detailed description of proposed methods ... on prior to development	0%
			... or model ... potential ... izing mo ... ta	... of novel machine learning techniques on ... t data contains predictive information ... learning model performance on prespecified ... internal clinical data or online datasource	93%
			... model is ... n origin ... lly data ... s are sp	... study on retrospective data from other centers ... study on prospectively collected data, not ... development of model and external validation	5%
			... nce is te ... ie EHR/ ... tings, bu ... v (i.e. ne	... rventional studies E.g. comparing model ... ndard of care ... s for automated clinical data extraction ... ppropriate	1%
			... ented in ... xposed t ... 'ety, and ... s are as ... valuated	... e 2' safety / usability	0%
			... del eval ... e 3' stud	... al intervention trial implementing the model ... nically relevant outcomes to a control group ... tation intervention studies comparing	1%
				... clinically relevant outcomes	
9	Actual system proven through successful mission operations	Model integration	Model has proven to work in a research setting in its final form and in expected conditions. Model is integrated in the clinical workflow and evaluated in different centers (if appropriate) whether it meets specifications	Long term model evaluation after integration in a clinical workflow Studies reporting changes in clinical care and adaptation to model by clinical personnel Guidelines recommending machine learning tools in routine clinical practice Post-implementation surveillance studies	0%

Model prototyping & Model development

93%

AI 模型需要第三期臨床試驗



台大醫院成立智慧醫療中心

資料



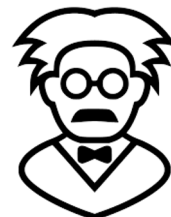
華人最優質的
醫療大數據

算力



啟用2台
AI 超級電腦/
建置運算專區

人才



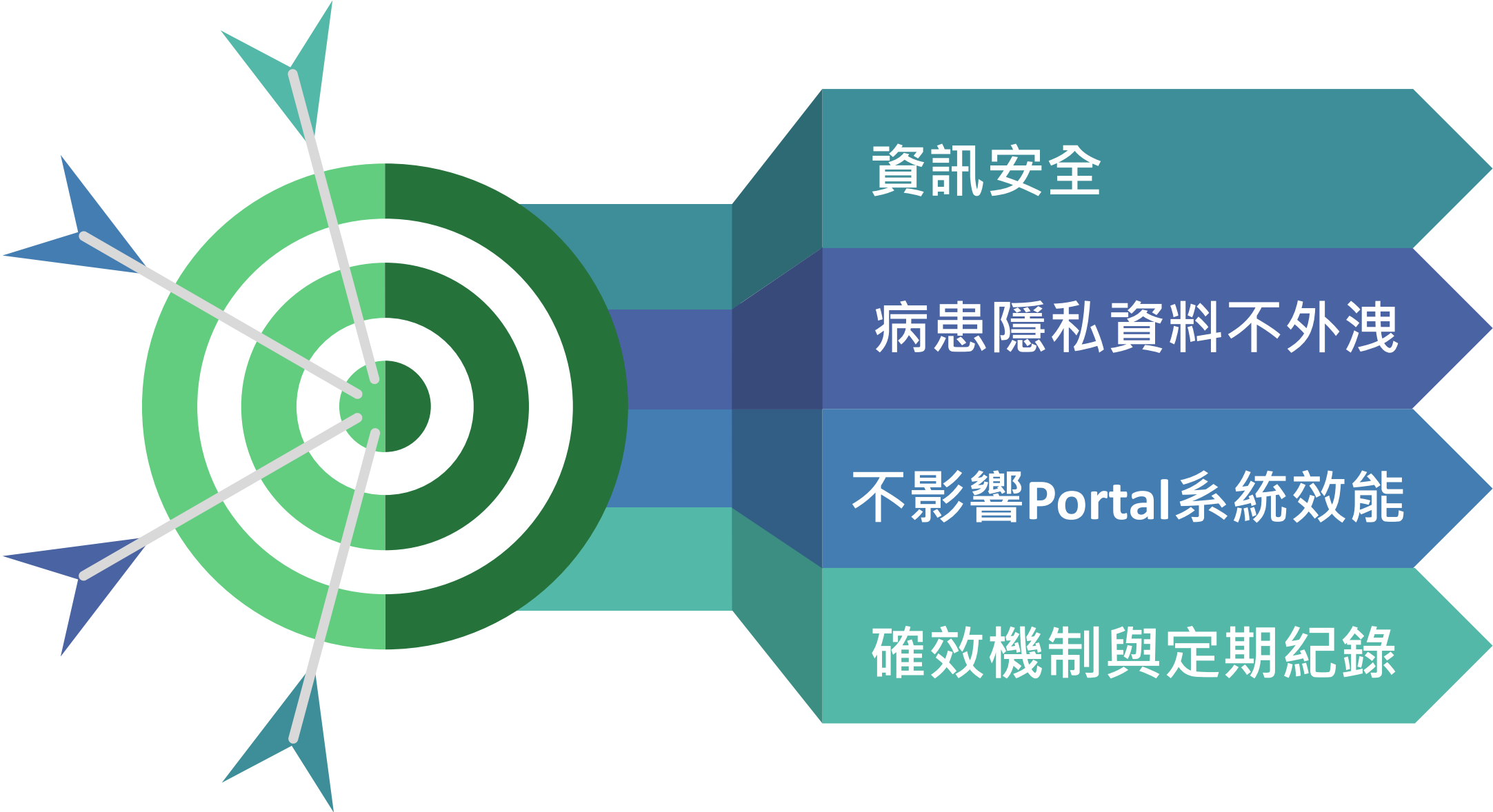
60個臺灣大學
人工智慧團隊/

轉譯

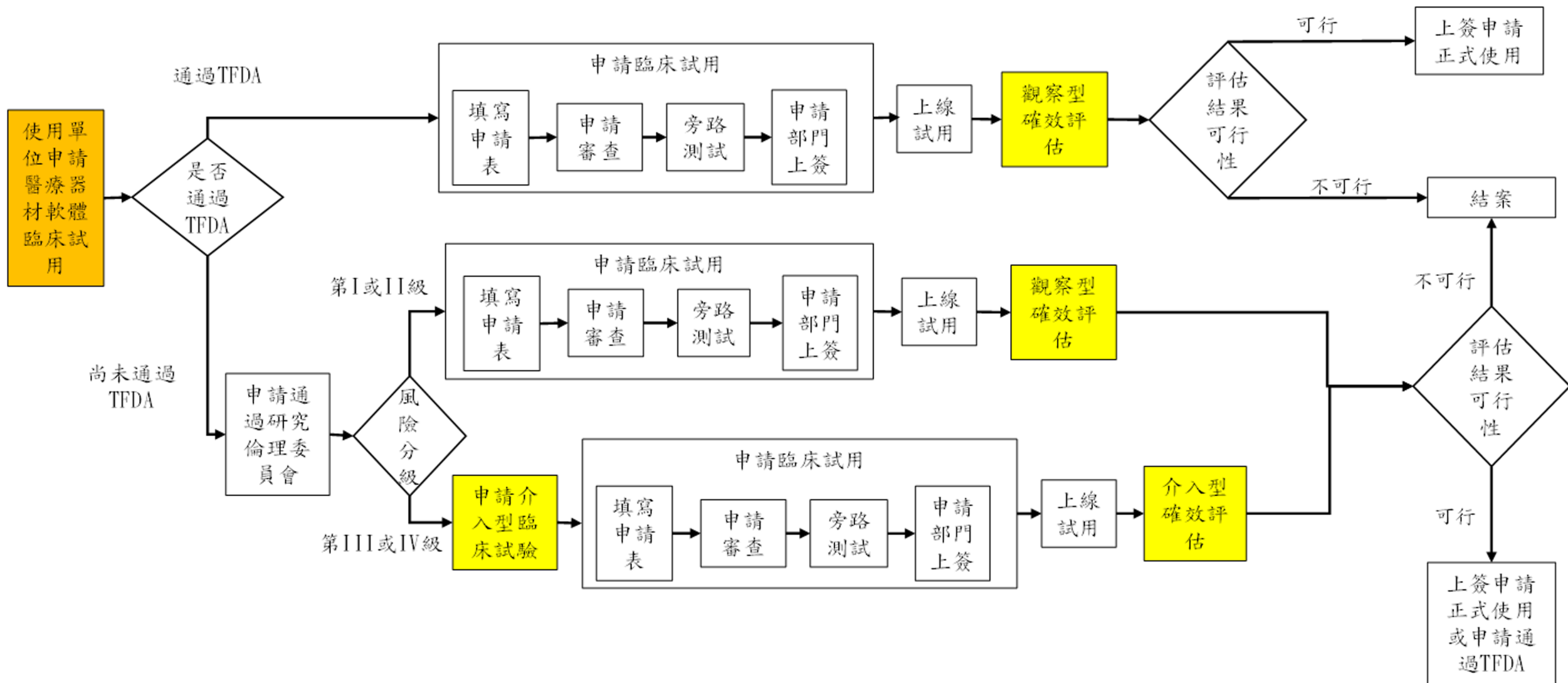


臨床試驗場域/
推動醫療醫材
軟體試用

落地辦法



台大醫院醫療器材軟體試用申請流程

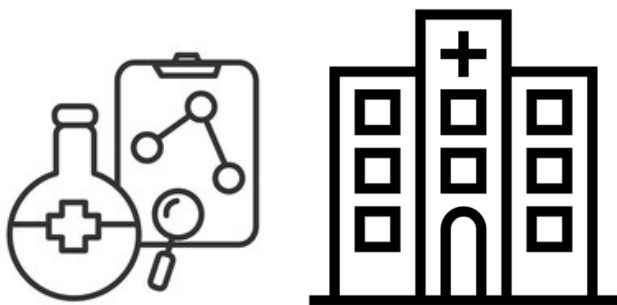


適用之醫療 照護情況	提供的資訊對於臨床照護決策之重要性		
	治療或診斷	驅動(drive) 臨床管理	告知(inform) 臨床管理資訊
危急情況	IV	III	II
嚴重情形	III	II	I
非嚴重情況	II	I	I

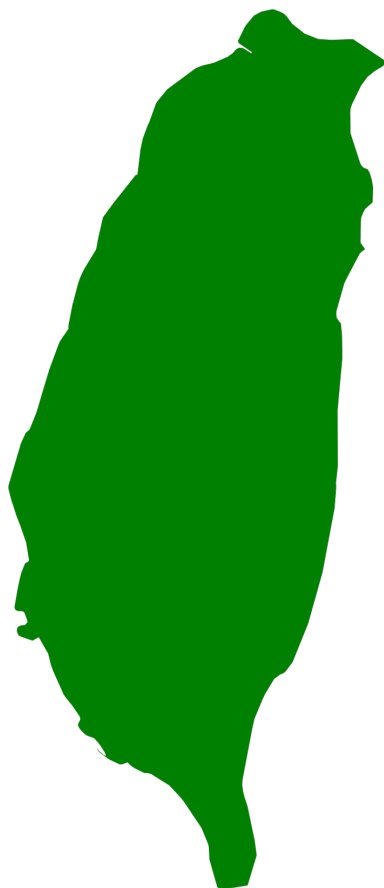
說明：

- 1.治療或診斷：醫材軟體輸出資訊直接作為醫師治療或診斷的依據
- 2.驅動(drive)臨床管理: 醫材軟體輸出的資訊啟動醫護人員對病人進行二度評估或介入
- 3.告知(inform)臨床管理資訊：醫材軟體輸出之資訊僅供參考，醫療診斷或決策由醫護人員執行

轉譯



High Quality Clinical
Trial Center



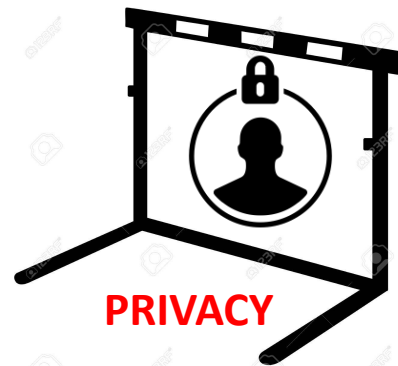
Education
Regulation

DATA ECONOMY

DATA SCIENCE



REGULATION



PRIVACY

DATA



Thank You

李建璋
台大智醫中心副主任